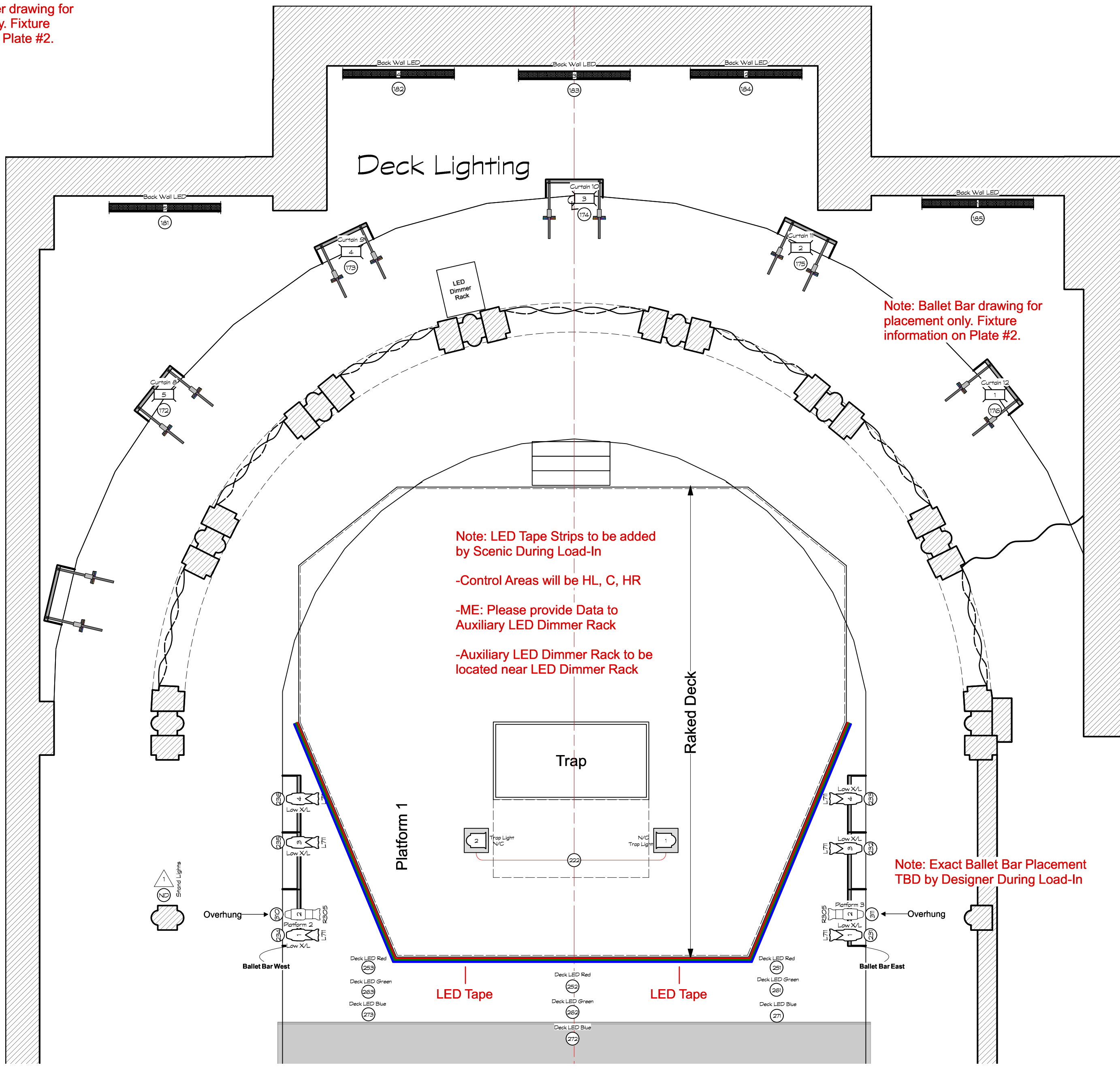
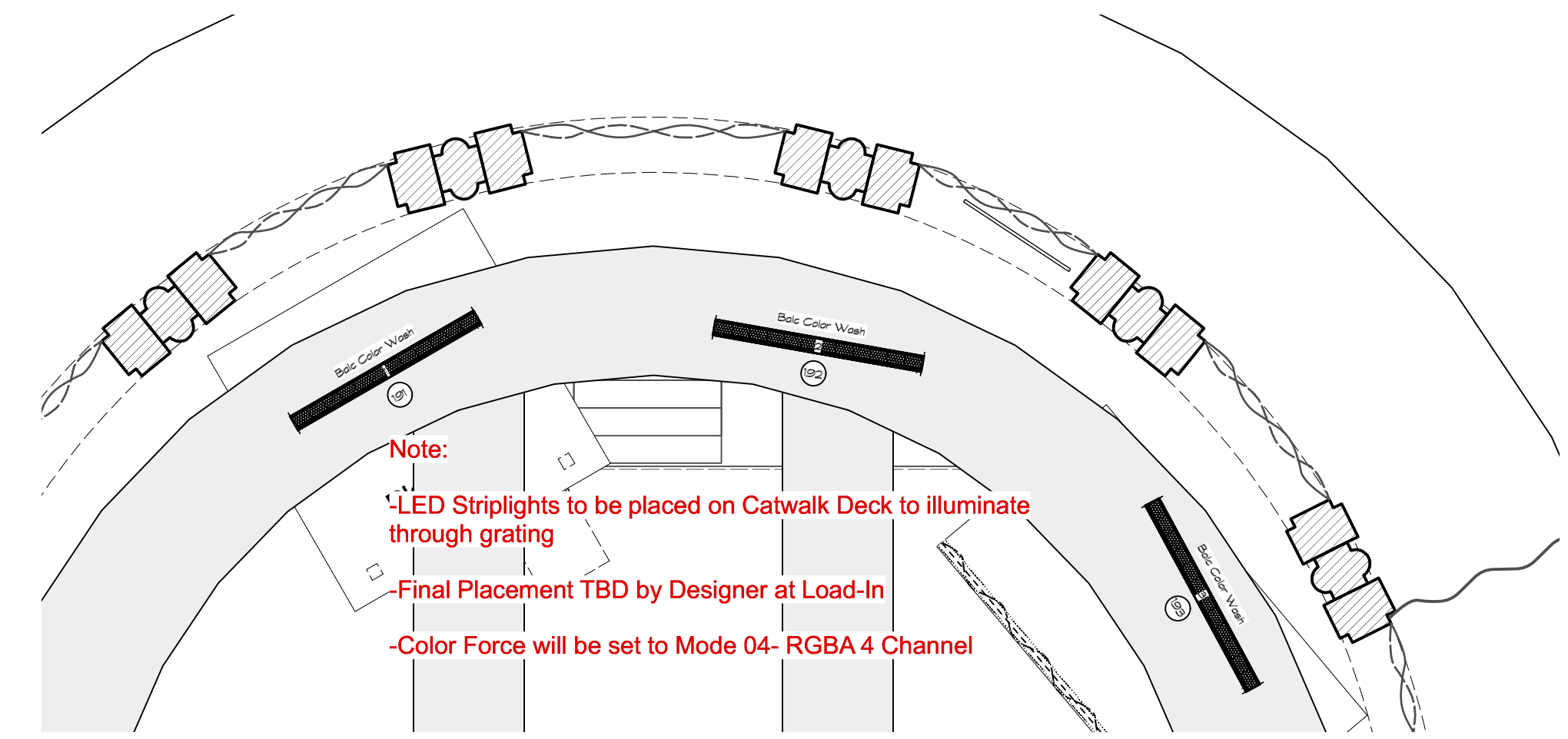
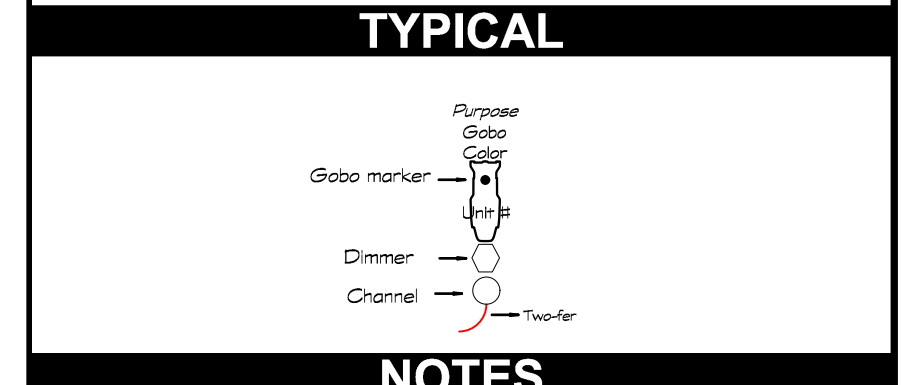


Note: Outtrigger drawing for placement only. Fixture information on Plate #2.



INSTRUMENT KEY	
	PAR 64 HFL 1000W
	6" FRESNEL 1000W
	ALTMAN HFL 1000W
	ALTMAN HFL 1000W
	SELAGOR VVD R, 125W
	F100 F100 FOSBERG
	LED Puck Light, 30W
	REP LIGHTING FIXTURE NOT USED
	VL 100-AS 575W
	Practical

ACCESSORIES	
	T3 BARN DOOR
	TOP HAT
	RS
	RS
	ON IT SCROLLER



- NOTES**
- Have Barndoors available for all stages of focus.
 - Have ample cuts of R119 for all stages of focus.
 - All units receive safety cable, color frame, & c-clamp unless otherwise noted.
 - Dimmers assigned by Master Electrician prior to load-in.
 - Master electrician to provide blue light and cue light as needed prior to first tech.
 - All fresnels set to medium flood prior to focus.
 - All color and templates to be dropped in at load in. Double gels- diffusion toward the lamp.
 - Work lights placed and circled per ME.
 - No substitutions of equipment, color or templates without the designer's approval.
 - All circling per ME.
 - Always refer to paperwork for detailed info and gobo images.
 - ME to discuss with LD which gels should be "H" Version.

THIS DRAWING REPRESENTS DESIGN INTENT AND CONCEPT. THE DESIGNER AND ASSISTANT DESIGNERS ARE RESPONSIBLE FOR THE VISUAL ASPECTS OF THE PRODUCTION ONLY. ALL DIMENSIONS ARE SUBJECT TO THE APPROVALS OF THE DESIGNER AND NOT TO MATTERS OF SAFETY OR STRUCTURAL STABILITY. THE IMPLEMENTATION OF THIS DESIGN MUST COMPLY WITH THE MOST STRINGENT APPLICABLE FEDERAL, STATE AND LOCAL SAFETY AND FIRE CODES. DESIGNERS ARE NOT QUALIFIED TO DETERMINE ELECTRICAL OR STRUCTURAL APPROPRIATENESS OF THE DESIGN AND WILL NOT ASSUME RESPONSIBILITY FOR DAMAGES RESULTING FROM IMPROPER ENGINEERING AND/OR IMPLEMENTATION IN THE HANDLING OF THIS DESIGN. THE DESIGNER AGREES TO MAKE ALTERATIONS TO ANY SPECIFICATIONS FOUND TO BE INCOMPATIBLE WITH PROPER SAFETY PRECAUTIONS.

Lighting Designer
C.J. Mellides
 cjm DESIGNS
 (787) 580-1024 / C.MELLIDES@GMAIL.COM / WWW.CJMELLIDES.COM

DIRECTOR Vince DeGeorge
STAGE MANAGER Michael Medina
MASTER ELECTRICIAN Penna Henderson
ASSISTANT LIGHTING DESIGNER Sarah Andersson

SCENIC DESIGNER Katelyn Budke
COSTUME DESIGNER Tommy Cobau

PRODUCED BY: UNIVERSITY OF CINCINNATI College-Conservatory of Music

VENUE: Cohen Family Studio Theatre

- REVISIONS**
- D Updates from Final Plot Meeting. Added 9/22/15 SDA LED Puck Lights into Plot. Adjusted Section View.
 - E Updated Color Chorus Mode # and Moved LED Dimmer Rack to Final Load-In Location 9/23/15 CJM

Big River

 THE ADVENTURES OF HUCKLEBERRY FINN
 10/08/15 - 10/10/15

Light Plot	
DRAFTING BY	CJM, SDA
VERSION	4.0
DATE	1/6/16
FILE REF	Big River LX V5.0.wdw
PAPER SIZE	Arch D
SCALE	1/4" = 1'